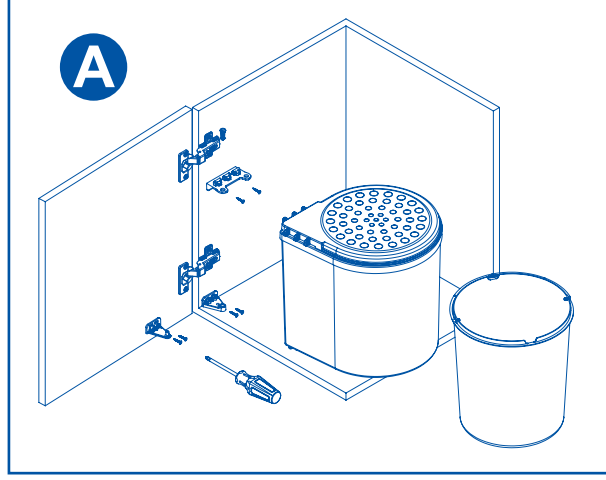


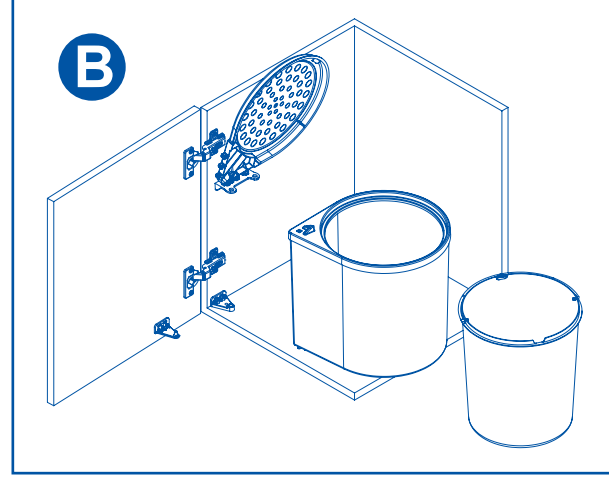
SOL / LEFT PP11LT

MESAN
FURNITURE EQUIPMENT

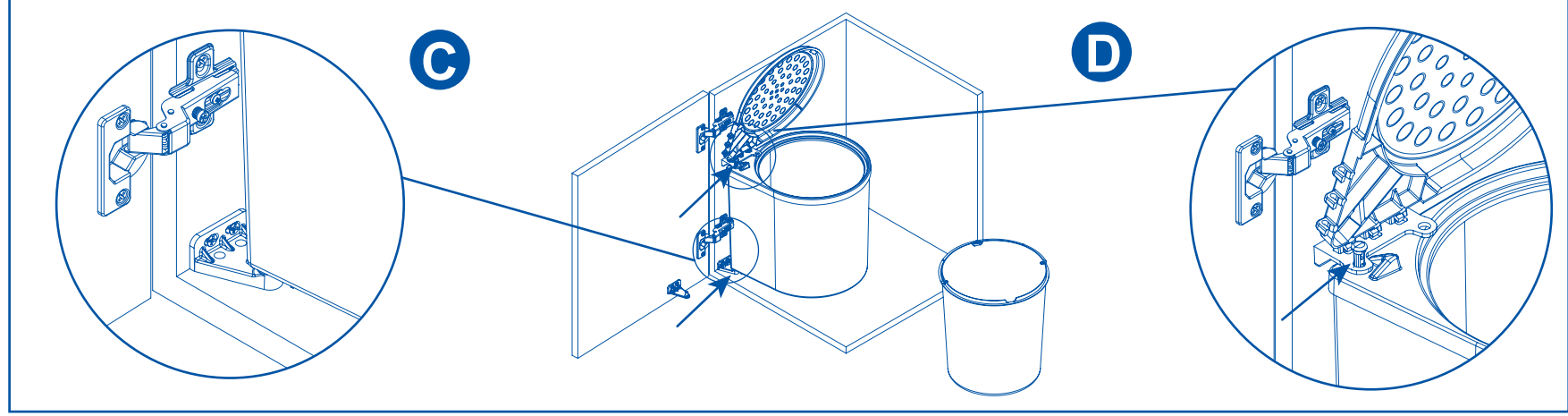
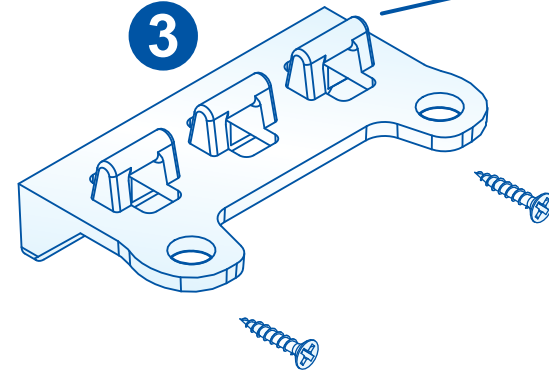
- Montaj şablonunu, dik düz çizgiler kapak ile dolap arasındaki boşluğa denk gelecek şekilde yerleştiriniz.
- Make sure that the vertical linear lines will be between door and cabinet while sticking assembly template



A) 1 2 3 Parçaları şablon üzerindeki yerlerine montaj ediniz.
A) Mount parts 1 2 3 on it's places showed on mounting template

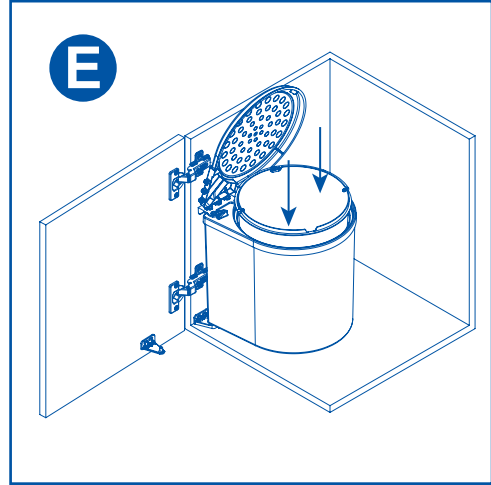


B) 6 nolu kapağı tımkarlarından 3 nolu parçadaki yerlerine oturtturarak sabitleyiniz.
B) Place cover 6 to coincide with the click-fits of part 3 and fix

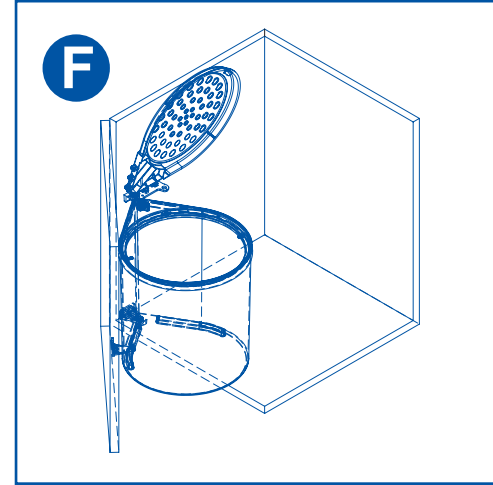


C) 4 nolu gövde üzerindeki pim 2 nolu parçadaki yuvaya denk gelecek şekilde yerleştiriniz.
C) Insert the pin on part 4 on the body part into socket on part 2

D) 5 nolu parçayı 3 ve 4 numaralı parçalardaki deliklere denk gelecek şekilde sabitleyiniz.
D) Place part 5 to coincide with the holes on parts 3 and 6 and fix

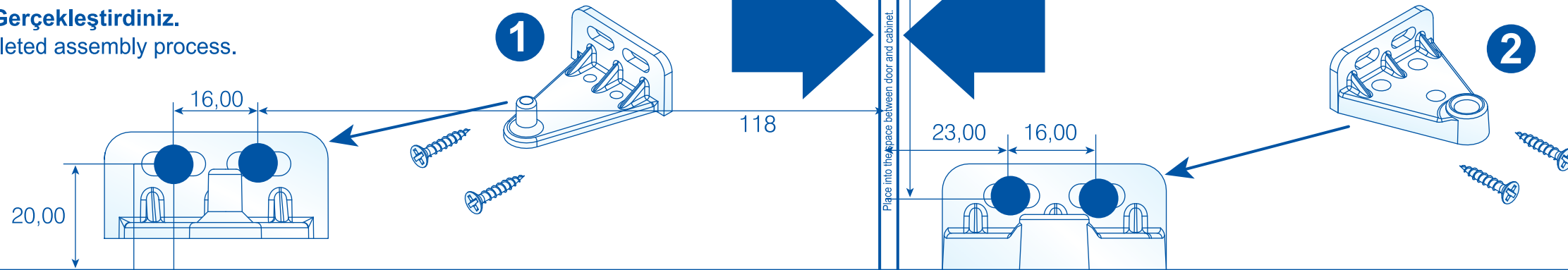


E) 7 nolu kovayı 4 nolu gövdenin içine oturtunuz.
E) Place bin 7 into the body part 4



F) 1 nolu parçadaki pimi 4 nolu gövdenin altındaki yuvaya oturtunuz.
F) Insert the pin of part 1 into the socket at the bottom of body 4

- G) Tebrikler Montaj İşlemini Başarı ile Gerçekleştirdiniz.
G) Congratulations, you successfully completed assembly process.



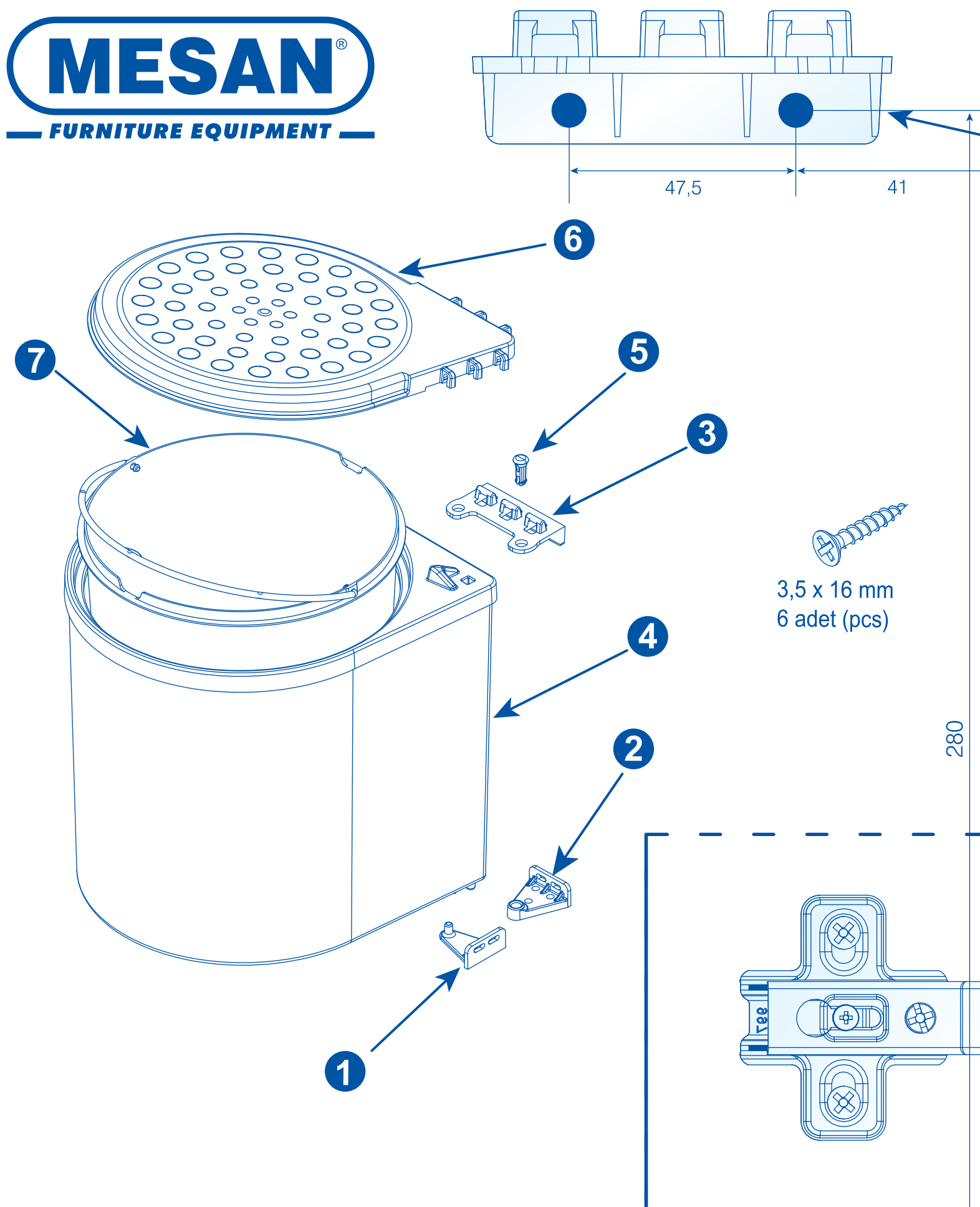
Place into the space between door and cabinet. / kapak ile dolap arasındaki boşluğa denk getiriniz.

280

3,5 x 16 mm
6 adet (pcs)

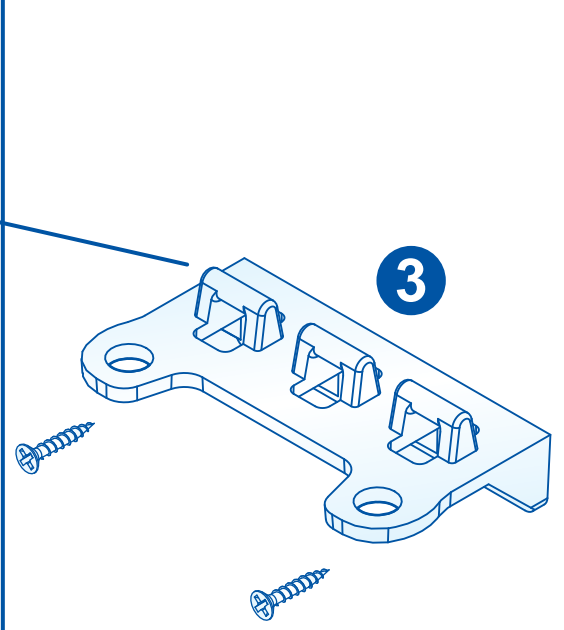
ŞABLONUN ALT KENARINI
DOLABIN İÇ TABANINA
OTURTUNUZ.

PLACE THE LOWER EDGE OF THE TEMPLATE TO
THE BOTTOM OF INTERNAL CABINET. CONGRATULATIONS
ASSEMBLY PROCESS WAS SUCCESSFULLY COMPLETED.

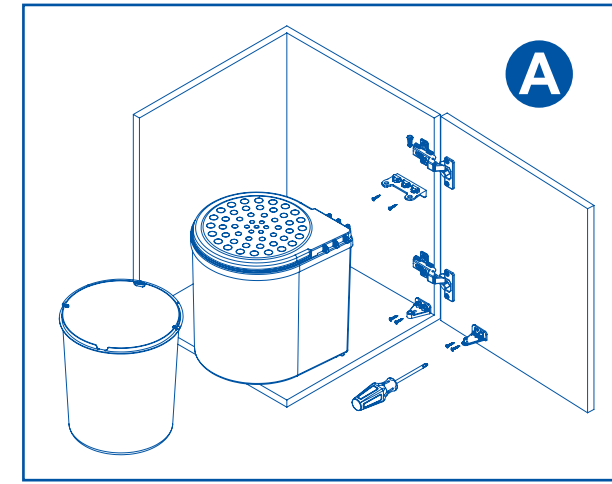


Place into the space between door and cabinet. / kapak ile dolap arasındaki boşluğa denk getiriniz.

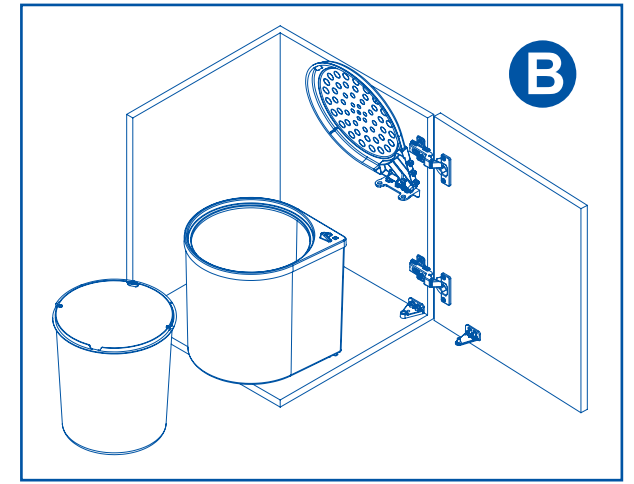
Place into the space between door and cabinet.



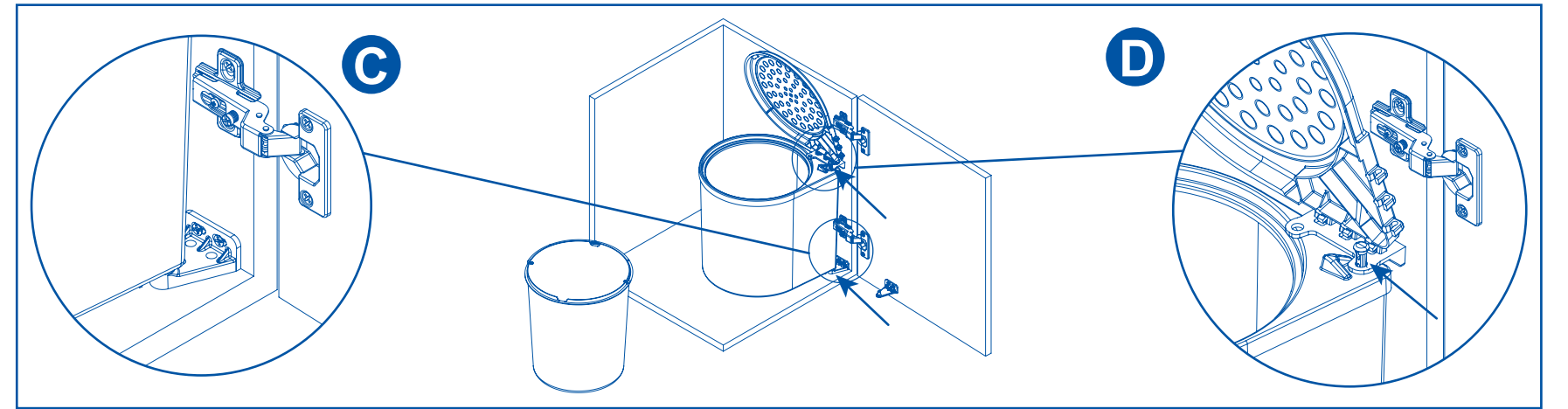
- Montaj şablonunu, dik düz çizgiler kapak ile dolap arasındaki boşluğa denk gelecek şekilde yerleştiriniz.
- Make sure that the vertical linear lines will be between door and cabinet while sticking assembly template



A) 1 2 3 Parçaları şablon üzerindeki yerlerine montaj ediniz.
A) Mount parts 1 2 3 on it's places showed on mounting template

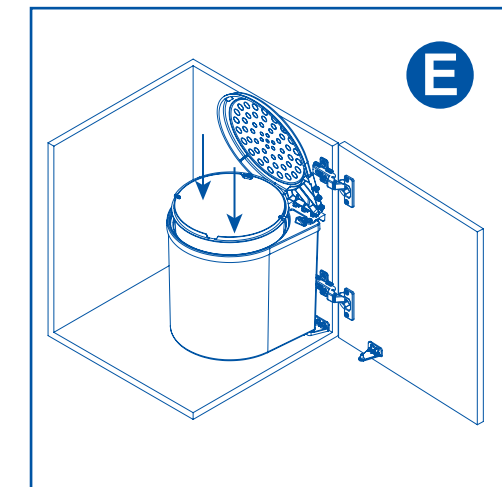


B) 6 nolu kapağı tırnaklarından 3 nolu parçadaki yerlerine oturttarak sabitleyiniz.
B) Place cover 6 to coincide with the click-fits of part 3 and fix

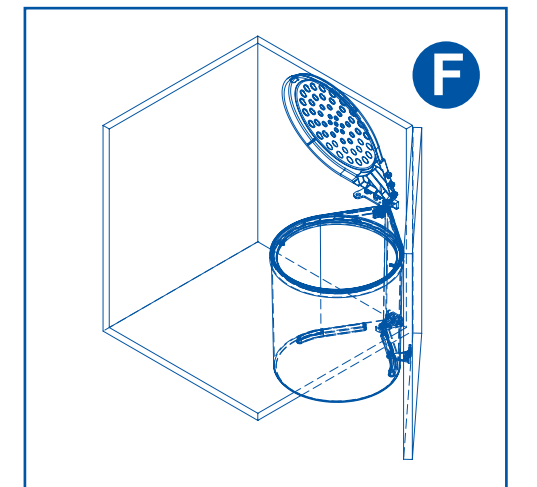


C) 4 nolu gövde üzerindeki pim 2 nolu parçadaki yuvaya denk gelecek şekilde yerleştiriniz.
C) Insert the pin on part 4 on the body part into socket on part 2

D) 5 nolu parçayı 3 ve 4 numaralı parçalardaki deliklere denk gelecek şekilde sabitleyiniz.
D) Place part 5 to coincide with the holes on parts 3 and 6 and fix

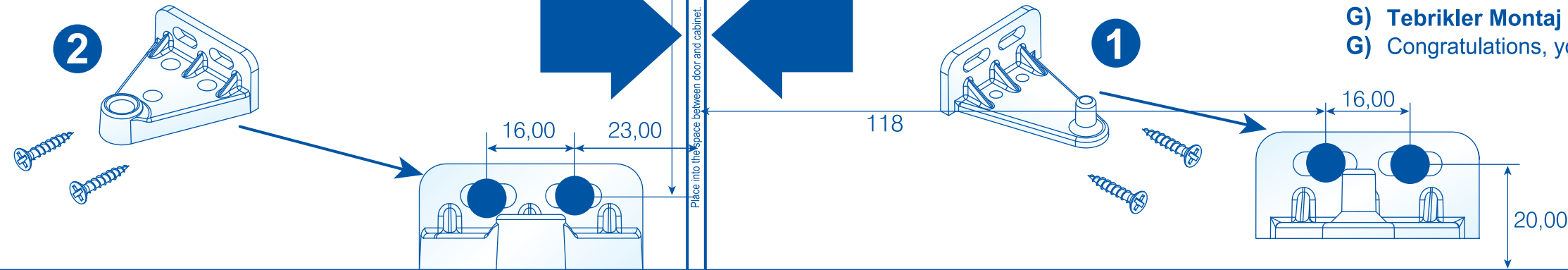


E) 7 nolu kovayı 4 nolu gövdenin içine oturtunuz.
E) Place bin 7 into the body part 4



F) 1 nolu parçadaki pimi 4 nolu gövdenin altındaki yuvaya oturtunuz.
F) Insert the pin of part 1 into the socket at the bottom of body 4

ŞABLONUN ALT KENARINI DOLABIN İÇ TABANINA OTURTUNUZ.
PLACE THE LOWER EDGE OF THE TEMPLATE TO THE BOTTOM OF INTERNAL CABINET. CONGRATULATIONS ASSEMBLY PROCESS WAS SUCCESSFULLY COMPLETED.



G) Tebrikler Montaj İşlemini Başarı ile Gerçekleştirdiniz.
G) Congratulations, you successfully completed assembly process.